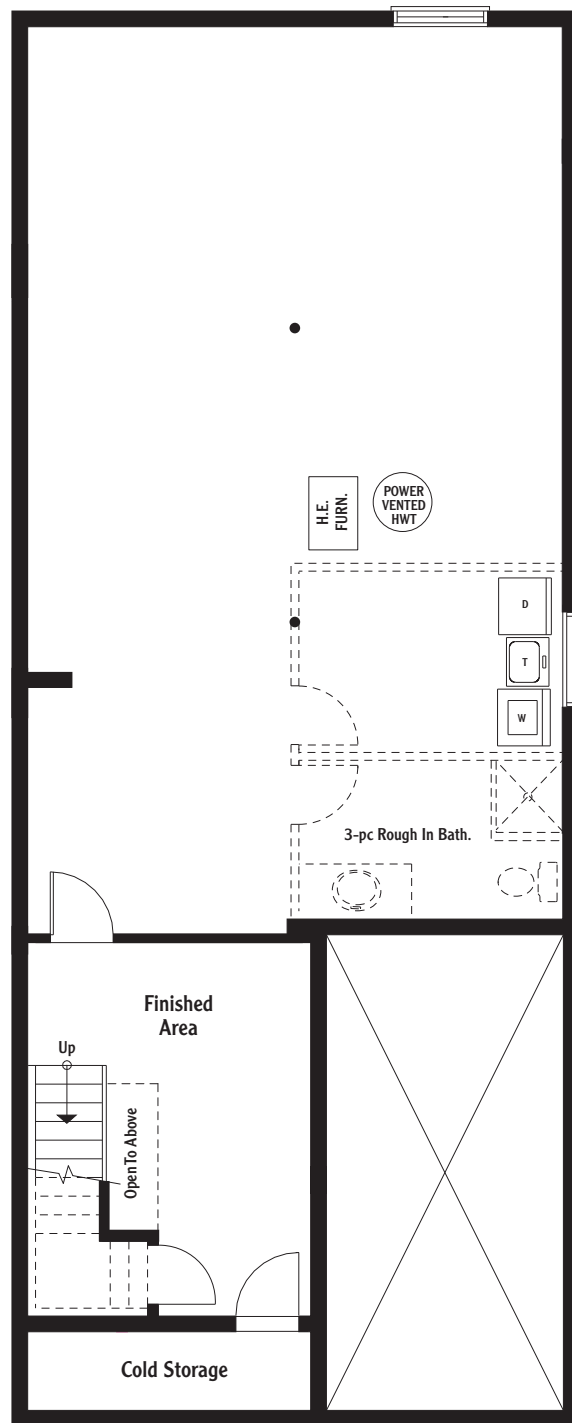


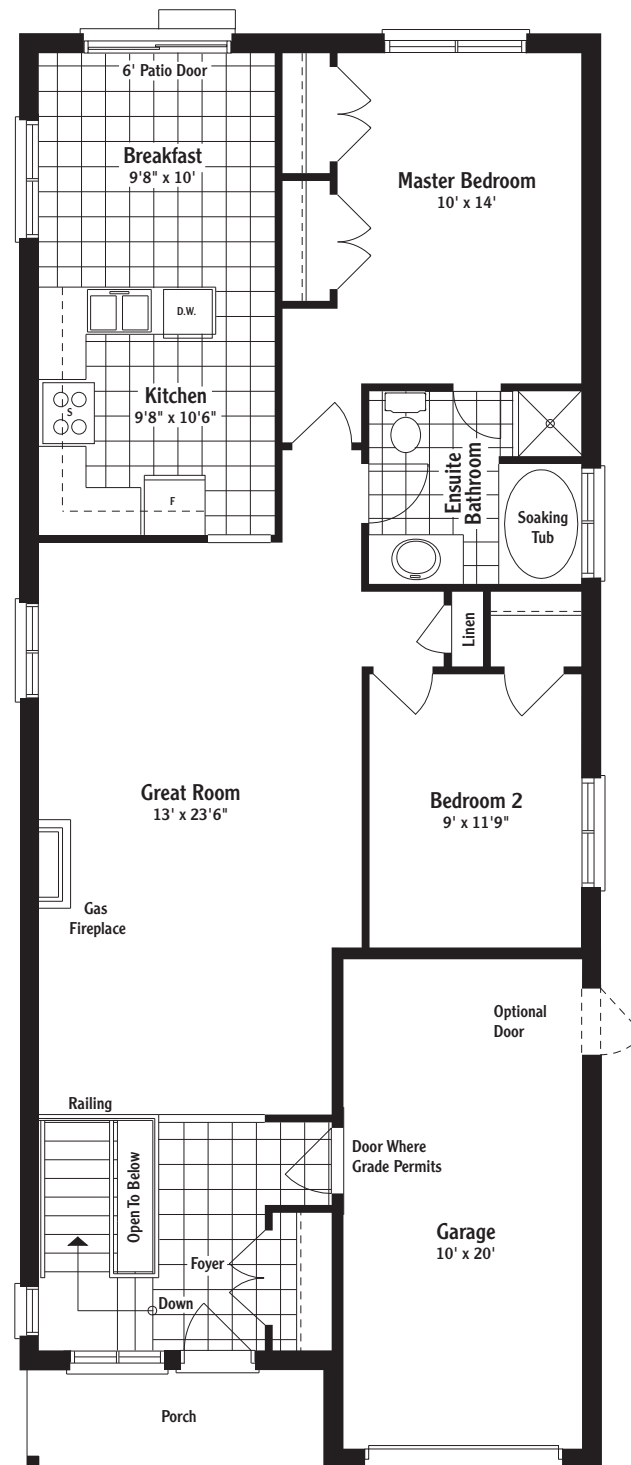
The Elgin

1,164 square feet

Come home to the Elgin where open concept kitchen and breakfast space open into the truly spectacular Great Room with working gas fireplace. Main floor master bedroom offers his and hers closets, ensuite bath with soaking tub and all the convenience of main floor living, with a second bedroom perfect for guests.



Basement Plan



Ground Floor Plan
(Elevation A)

Dimensions are approximate and subject to change. All specifications are subject to change or alteration without notice. Exterior colours will be pre-selected in the architecturally-controlled master community plan. All illustrations are artist's concepts. E & OE. February '09

See your Sales Representative for variations on this house design.