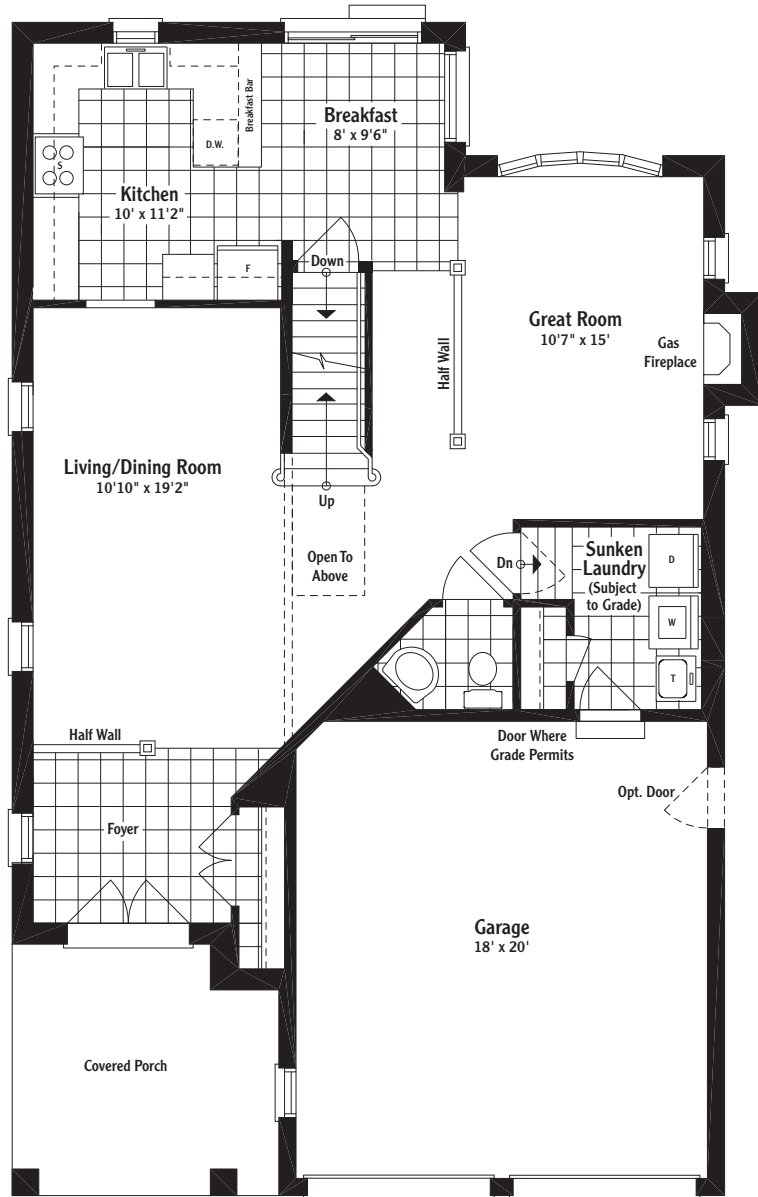


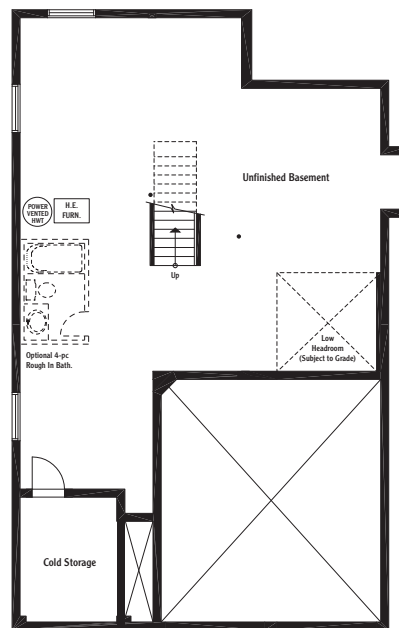
The Forestridge

2,128 square feet

Welcome to your new home, where full-sized kitchen and breakfast areas are perfectly complimented by gorgeous living and dining rooms, Great Room and spectacular foyer – the perfect place to greet friends and guests.
Upper level includes the magnificent master bedroom with oversized walk-in closet and luxury ensuite bath.

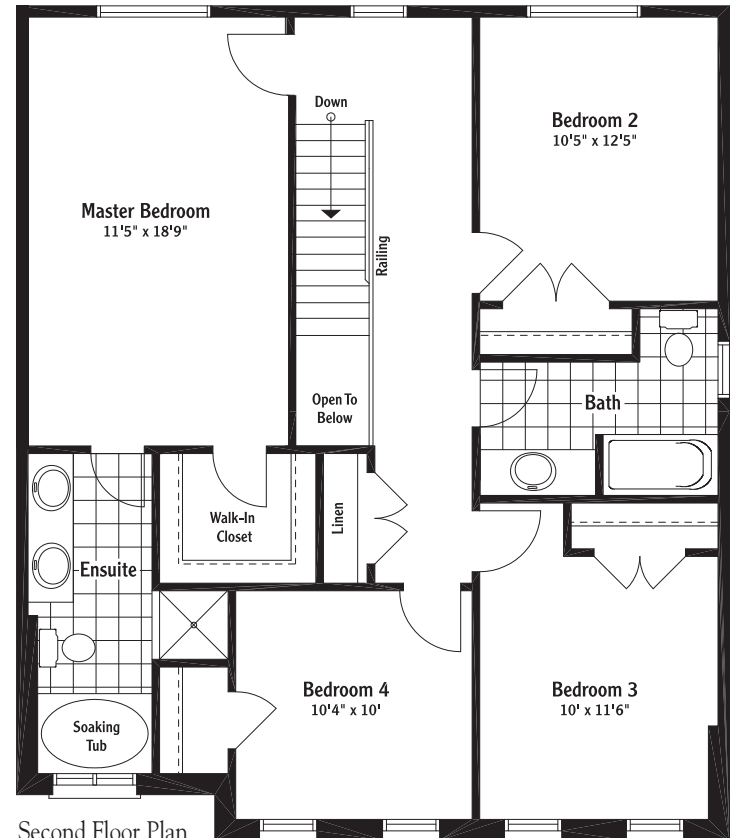


Ground Floor Plan

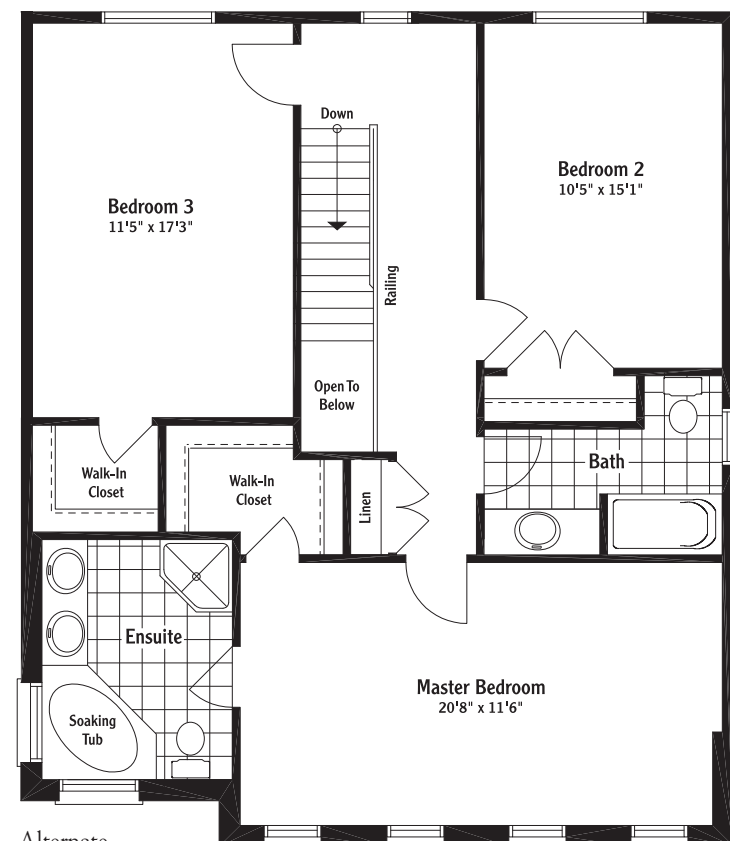


Basement Plan
(Not to scale)

Dimensions are approximate and subject to change. All specifications are subject to change or alteration without notice. Exterior colours will be pre-selected in the architectural master community plan. All illustrations are artist's concepts. E & OE. February '09



Second Floor Plan
(Elevation A)



Alternate
Second Floor Plan
(Elevation A)

See your Sales Representative for variations on this house design.