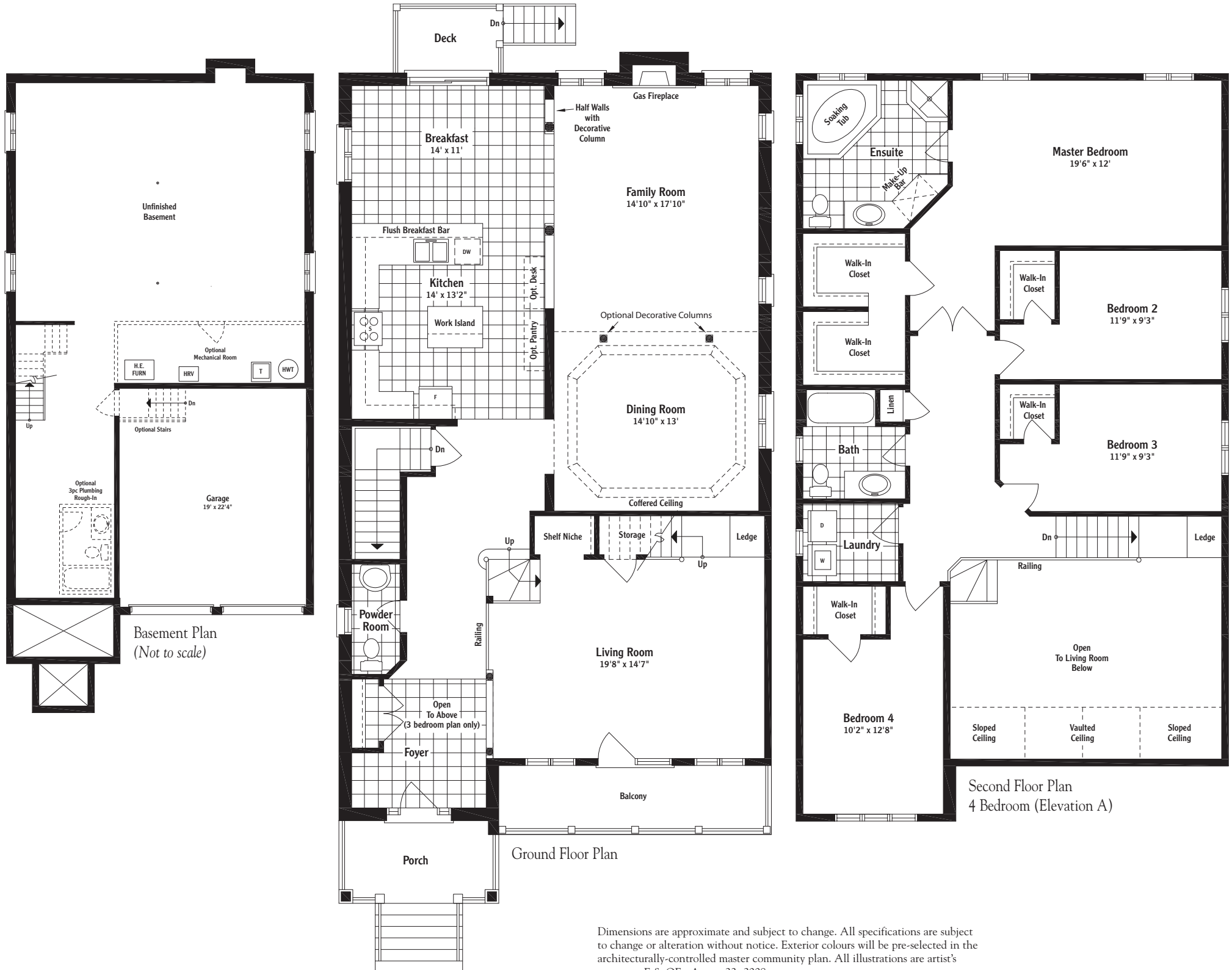


The Highbury 40

2,942 square feet 4-bedroom home

Step into a whole new world of contemporary convenience – main floor living includes a full sized contemporary kitchen with work island opening onto the brightly lit breakfast area with walk out deck, plus spacious family, living and dining areas. Four full sized bedrooms on the second floor, full sized luxury ensuite bath off the master bedroom, upper level laundry and vaulted ceilings open to the living room below are every homeowner's dream come true – make it yours today.



Dimensions are approximate and subject to change. All specifications are subject to change or alteration without notice. Exterior colours will be pre-selected in the architecturally-controlled master community plan. All illustrations are artist's concepts. E & OE. August 22, 2008

See your Sales Representative for variations on this house design.