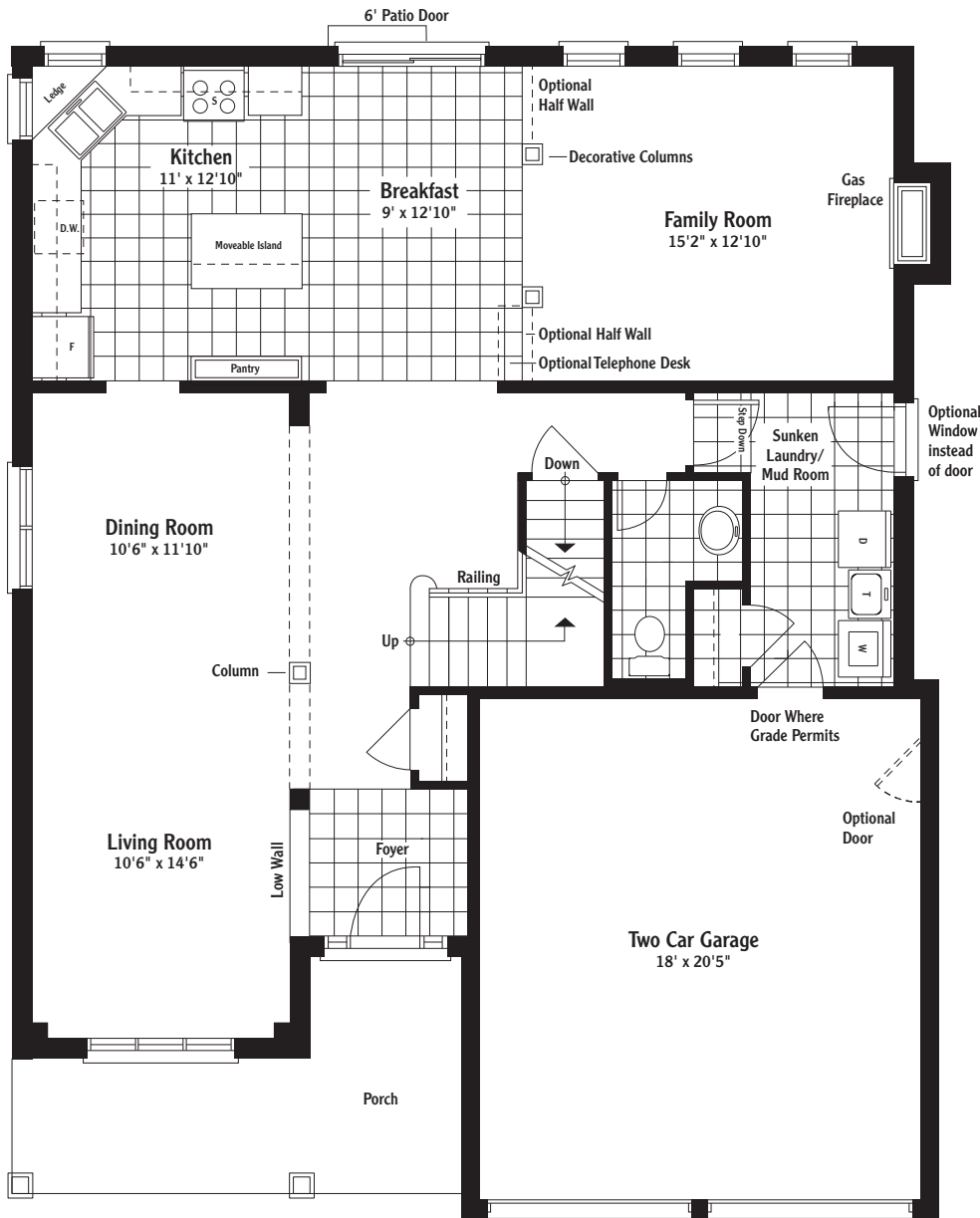


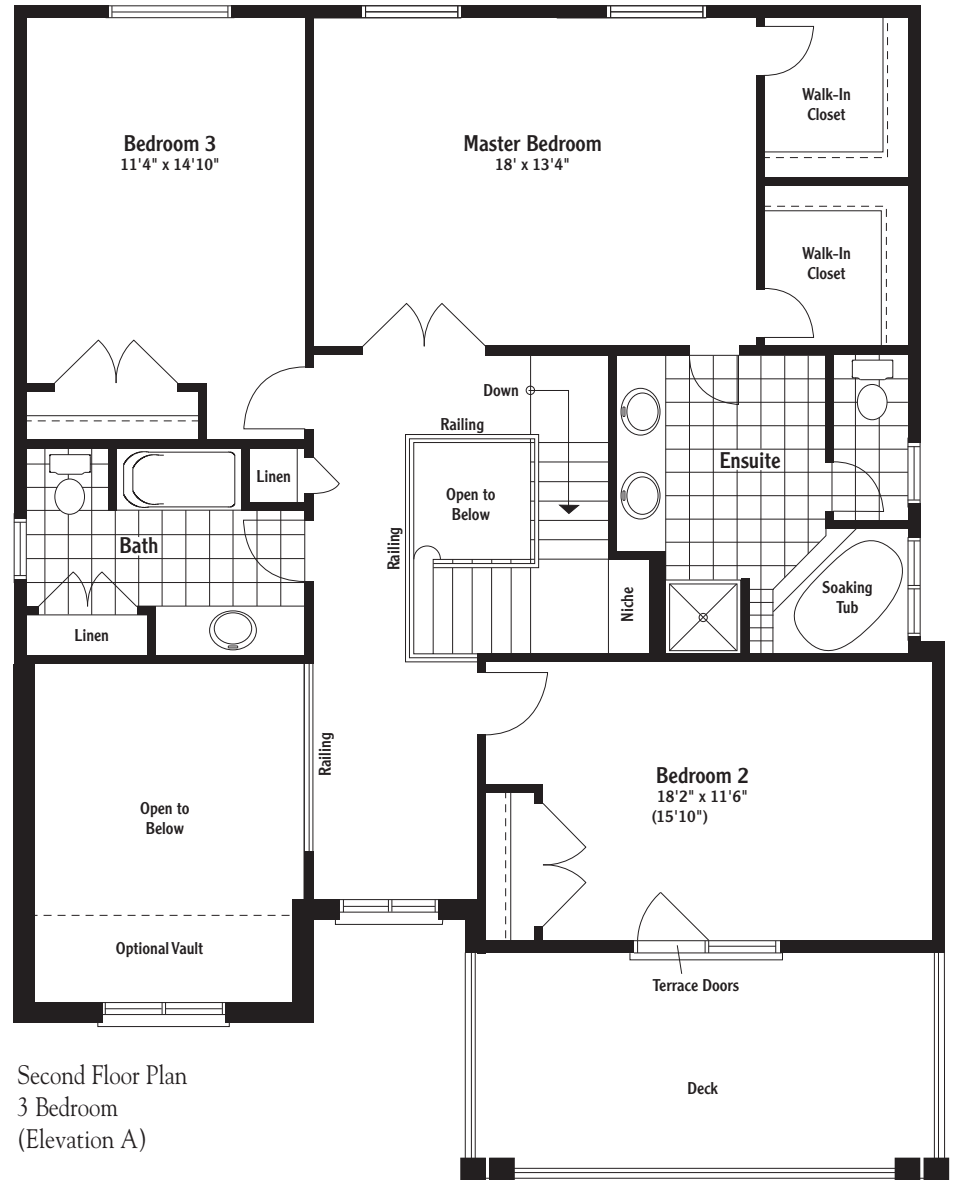
The Windermere

2,510 square feet 3-bedroom home 🌿 2,661 square feet 4-bedroom home

This home is absolutely exquisite. In the 3-bedroom version, there is a dramatic 2-storey living room with vaulted ceiling. It also features a gorgeous, gourmet-styled kitchen with a moveable, preparation island and windows above the corner sinks, while the master bedroom suite is immense, with his and her walk-in closets. Windermere is truly an executive home in every description.

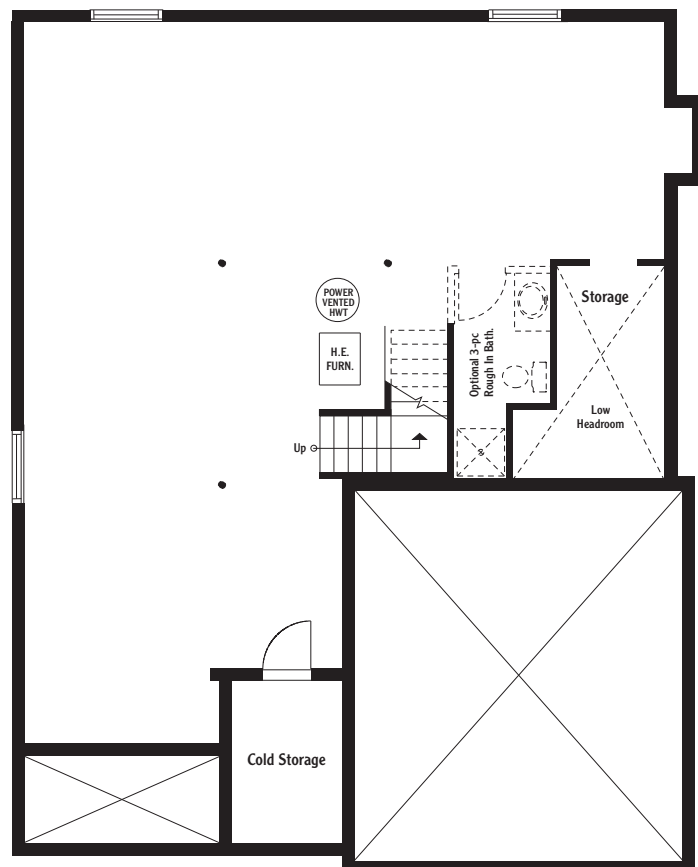


Ground Floor Plan



Second Floor Plan
3 Bedroom
(Elevation A)

Dimensions are approximate and subject to change. All specifications are subject to change or alteration without notice. Exterior colours will be pre-selected in the architecturally-controlled master community plan. All illustrations are artist's concepts. E & OE. November 28, 2006



Basement Plan (Not to scale)

See your Sales Representative for variations on this house design.